



BULLWORTHY

THE GARAGE EQUIPMENT SPECIALISTS

T2410-BT

WHEEL ALIGNMENT SYSTEM



TECHNIQUE

PRECISION WHEEL ALIGNMENT TECHNOLOGY

The Technique T2410-BT wheel alignment system encapsulates the latest Bluetooth, Infra-red, and 6 Sensor CCD four-wheel alignment technology, in a neat and compact trolley. Due to the systems ease of use, speed, and low cost it remains our front-line system for all types of Workshop and Bodyshop.

Most noticeable when using the system is the tidiness of the machine, its 100% cable free. Each head recharges when placed back onto the trolley and allows maximum mobility when moving around the workshop to different working positions. Furthermore, each head includes a remote-control function so the user can run the wheel alignment program from any corner of the vehicle.

All Technique systems are sold with the Pro 3 Point Wheel Clamps eliminating the need for run out compensation. The Shoot & Go software pack speeds up the vehicle recognition by the simple use of a tablet or smart phone camera, and additionally allows the user to see the visuals at the point of working, rather than a constant line of sight with the trolley CPU.

Program features such as the Spoiler Program automatically operate for sports cars and modified cars, along with 3D animated graphics for user instructions. Further enhancements are available such as Teq-Link and ADAS enhancement are all capabilities of the software package.



PACKAGE INCLUDES

- PC Control Centre – Printer, keyboard and mouse.
- Remote controlled measuring heads.
- Head charging system.
- 2 x Front turn plates.
- 4 x Pro 3 Point Clamps.
- Steering wheel clamp.
- Brake pedal depressor.
- Shoot & Go software.
- 24-month warranty.



Lift not included.

INFA-RED MEASURING HEADS



Infra-red measuring heads powered by long life rechargeable batteries.



Keyboard with remote control function.



LED signal repeaters on each measuring head.

THE CONTROL UNIT



20" full colour TFT monitor.

Special supports to house the measuring heads and recharge the batteries.

The mobile control unit houses the CPU, printer and monitor.

Robust state of the art trolley.

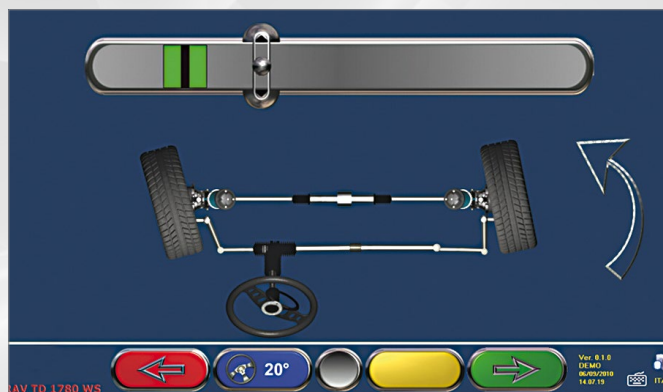
The printer can operate when the drawer is closed.

Drawer to store clamps and other accessories.



SPOILER PROGRAM

The spoiler program is automatically activated to perform the measurements on sport and tuned car bodies through a simplified procedure.



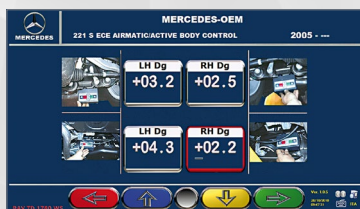
10° / 20° CCD STEERING

The steering procedure is carried out electronically, through the CCD sensors, so caster and king pin are measured with great precision.



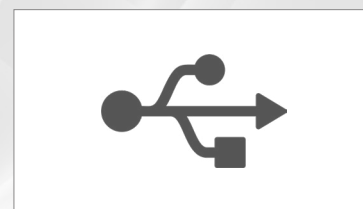
QUICK DIAGNOSTIC

The **quick measurement** of axle set back, wheelbase and track-width, may highlight any errors in the vehicles body and chassis symmetry.



DYNAMIC DATA BANK

The data bank automatically modifies the alignment specifications based on chassis height.



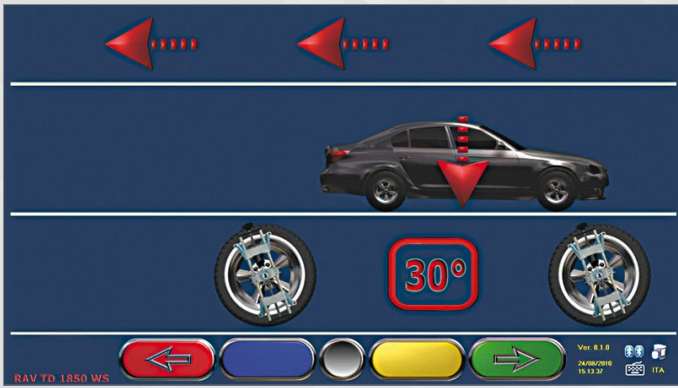
EASY UPDATE

SMART CARD for quick data bank update and USB KEY to save and restore customer data.

QUICK RUN OUT

It is possible to measure wheel run out by moving the vehicle by only 30° (quick compensation in a little space)* without lifting the vehicle.

Ø 500mm > 150mm	Ø 600mm > 170mm
Ø 700mm > 200mm	Ø 800mm > 230mm



EASY FIND

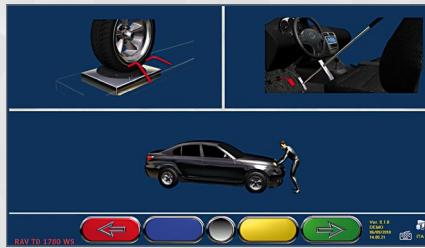
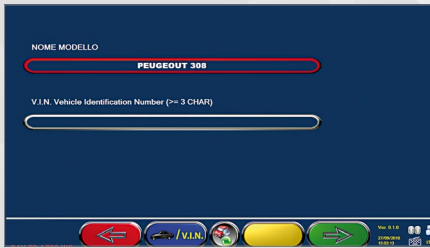
Quick entering of vehicle by model or V.I.N number.

3D ANIMATION

Clear and precise display of the adjustment points in 3D graphics.

3D INFO

User's instructions by animated graphics.



EASY DATA ACCESS



- Data management and display application for Windows OS.
- Data bank with more than 90,000 vehicle data sheets.
- Further data sheets can be added by the user at anytime.
- Customer data bank for recording 20,000 jobs with search by customer name or vehicle number plate.

EASY ALIGNMENT



All this is included!



Mobile control unit complete with a PC, 19" monitor, keyboard, printer and battery charger.



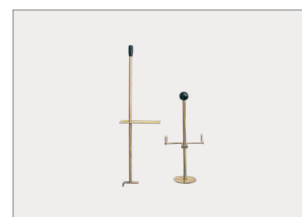
2 x front measuring heads.



2 x rear measuring heads.



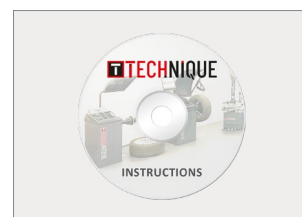
1 x pair of turntables.
Diameter: 310mm.
Capacity: 1000kg each.



1x brake pedal depressor and 1x steering wheel lock.



4 x 3 point pro clamps.



Instruction manual on interactive CD-ROM.

Technical features	Accuracy	Measuring range	Total measuring range
Front axle			
Total toe	+/- 2'	+/- 2°	+/- 20°
Partial toe	+/- 1'	+/- 1°	+/- 20'
Set-back	+/- 2'	+/- 2°	+/- 5°
Camber	+/- 2'	+/- 3°	+/- 10°
Caster	+/- 5'	+/- 10°	+/- 18°
King-pin	+/- 5'	+/- 10°	+/- 18°
Rear axle			
Total toe	+/- 2'	+/- 2°	+/- 20°
Partial toe	+/- 1'	+/- 1°	+/- 20°
Set-back	+/- 2'	+/- 2°	+/- 5°
Camber	+/- 2'	+/- 3°	+/- 10°
Thrust angle	+/- 2'	+/- 2°	+/- 5°



**THE FUTURE OF
TYRE DIAGNOSTICS
IS HERE**

TTECHNIQUE



BULLWORTHY
THE GARAGE EQUIPMENT SPECIALISTS

MAIN OFFICE: UNIT 7, MANOR BUSINESS PARK, WOODFORD HALSE, NORTHAMPTONSHIRE, NN11 3UB.



(01295) 768373



enquiries@bullworthy.co.uk



www.bullworthy.co.uk